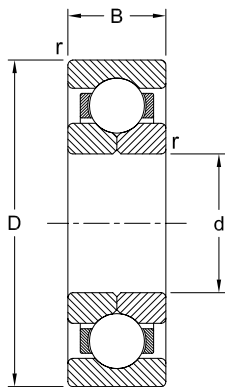
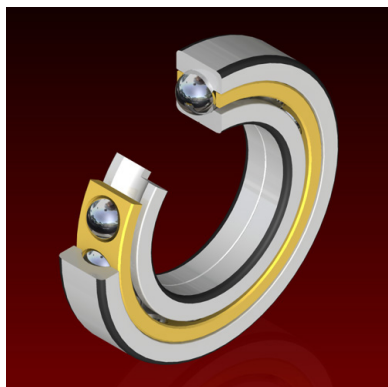


# Ball Bearings

Four Point Contact  
Metric Series

**QJ200, QJ300**



Dimensions				Load Rating		AEC Bearing	M
mm				kN			
d	D	B	r	Dynamic (C)	Static (C <sub>0</sub> )		
20	52	15	1.1	29.6	20.0	<b>QJ 304</b>	•
25	52	15	1.0	25.1	20.0	<b>QJ 205</b>	•
30	62	16	1.0	35.1	28.5	<b>QJ 206</b>	•
	72	19	1.1	49.4	39.0	<b>QJ 306</b>	•
35	72	17	1.1	46.2	39.0	<b>QJ 207</b>	•
	80	21	1.5	59.2	46.5	<b>QJ 307</b>	•
40	80	18	1.1	52.7	45.0	<b>QJ 208</b>	•
	90	23	1.5	71.5	58.5	<b>QJ 308</b>	•
45	85	19	1.1	58.5	51.0	<b>QJ 209</b>	•
	100	25	1.5	93.6	76.5	<b>QJ 309</b>	•
50	90	20	1.1	61.8	56.0	<b>QJ 210</b>	•
	110	27	2.0	111.0	91.5	<b>QJ 310</b>	•
55	100	21	1.5	79.3	76.5	<b>QJ 211</b>	•
	120	29	2.0	127.0	108.0	<b>QJ 311</b>	•
60	110	22	1.5	92.3	86.5	<b>QJ 212</b>	•
	130	31	2.1	146.0	125.0	<b>QJ 312</b>	•
65	120	23	1.5	104.0	104.0	<b>QJ 213</b>	•
	140	33	2.1	165.0	146.0	<b>QJ 313</b>	•
70	125	24	1.5	114.0	114.0	<b>QJ 214</b>	•
	150	35	2.1	186.0	166.0	<b>QJ 314</b>	•
75	130	25	1.5	117.0	122.0	<b>QJ 215</b>	•
	160	37	2.1	199.0	186.0	<b>QJ 315</b>	•
80	140	26	2.0	138.0	146.0	<b>QJ 216</b>	•
	170	39	2.1	216.0	208.0	<b>QJ 316</b>	•
85	150	28	2.0	148.0	160.0	<b>QJ 217</b>	•
	180	41	3.0	234.0	236.0	<b>QJ 317</b>	•
90	160	30	2.0	174.0	186.0	<b>QJ 218</b>	•
	190	43	3.0	265.0	285.0	<b>QJ 318</b>	•

Dimensions				Load Rating		AEC Bearing	M
mm				kN			
d	D	B	r	Dynamic (C)	Static (C <sub>0</sub> )		
95	170	32	2.1	199.0	212.0	<b>QJ 219</b>	•
	200	45	3.0	286.0	315.0	<b>QJ 319</b>	•
100	180	34	2.1	225.0	240.0	<b>QJ 220</b>	•
	215	47	3.0	307.0	340.0	<b>QJ 320</b>	•
110	200	38	2.1	265.0	305.0	<b>QJ 222</b>	•
	240	50	3.0	364.0	430.0	<b>QJ 322</b>	•
120	215	40	2.1	286.0	340.0	<b>QJ 224</b>	•
	260	55	3.0	390.0	490.0	<b>QJ 324</b>	•
130	230	40	3.0	296.0	365.0	<b>QJ 226</b>	•
	280	58	4.0	423.0	560.0	<b>QJ 326</b>	•
140	250	42	3.0	325.0	440.0	<b>QJ 228</b>	•
	300	62	4.0	468.0	640.0	<b>QJ 328</b>	•
150	270	45	3.0	338.0	465.0	<b>QJ 230</b>	•
	320	65	4.0	494.0	710.0	<b>QJ 330</b>	•
160	290	48	3.0	390.0	570.0	<b>QJ 232</b>	•
	310	52	4.0	397.0	600.0	<b>QJ 234</b>	•
170	360	72	4.0	618.0	965.0	<b>QJ 334</b>	•
	320	52	4.0	436.0	680.0	<b>QJ 236</b>	•
180	380	75	4.0	637.0	1020.0	<b>QJ 336</b>	•
	200	58	4.0	507.0	850.0	<b>QJ 240</b>	•
220	400	65	4.0	553.0	980.0	<b>QJ 244</b>	•