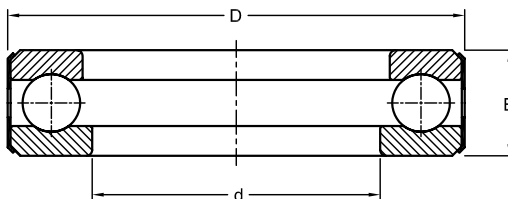


Ball Bearings

Full Complement Thrust
Inch Series

D



Dimensions			Load Rating		AEC Bearing
inch			kN		
d	D	B	Dynamic (C)	Static (C ₀)	
0.500	1.2190	0.5625	14.5	15.4	D 1
0.625	1.3438	0.5625	15.5	20.3	D 3
0.750	1.4688	0.5625	16.0	22.8	D 5
0.875	1.8438	0.6250	24.0	40.3	D 7
1.000	1.9688	0.6250	25.1	43.2	D 9
1.125	2.0940	0.6250	25.8	47.0	D 11
1.250	2.3438	0.6250	27.0	54.4	D 13
1.375	2.4687	0.6250	27.5	58.4	D 15
1.500	2.5938	0.6250	28.3	66.7	D 17
1.750	3.0938	0.8125	39.3	96.0	D 21
2.000	3.3438	0.8125	40.8	107.0	D 25
2.250	3.7190	0.8125	42.0	118.0	D 29
2.438	3.8438	0.8125	43.2	122.5	D 32
2.500	3.9688	0.8125	43.2	129.0	D 33
2.750	4.4690	1.0000	68.5	190.0	D 37
2.813	4.4690	1.0000	68.5	190.0	D 38
3.000	4.5940	1.0000	68.5	190.0	D 39.1/2
3.000	4.7190	1.0000	70.5	198.2	D 40
3.250	4.9690	1.0000	72.6	218.0	D 41