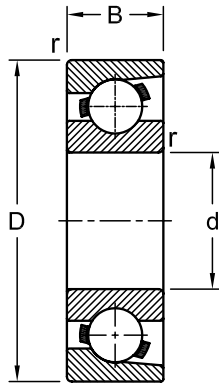


# Ball Bearings

Magneto  
Metric Series

**E, BO, L**



Dimensions				Load Rating		AEC Bearing	M
mm				kN			
d	D	B	r	Dynamic (C)	Static (C <sub>0</sub> )		
10	28	8	0.5	4.44	0.72	E 10	
12	32	7	0.5	3.58	0.74	E 12	
13	30	7	0.3	3.57	0.74	E 13	•
14	35	8	0.5	4.70	1.00	E 14	•
15	35	8	0.5	4.70	1.00	E 15	•
	40	10	1.0	7.55	1.50	BO 15	
17	40	10	0.6	5.96	1.31	L 17	•
	44	11	1.0	9.00	1.87	BO 17	
19	40	9	0.7	3.64	0.94	E 19	
20	47	12	1.0	9.20	2.04	E 20	•
	47	14	1.5	9.20	2.04	L 20	
	52	15	2.0	12.78	2.65	M 20	
25	52	15	1.5	9.20	2.04	L 25	
30	62	16	1.5	7.55	2.24	L 30	