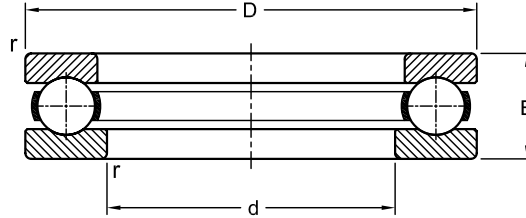
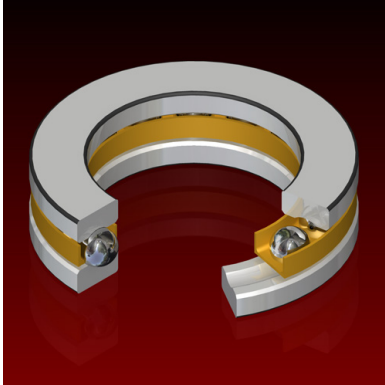


Ball Bearings

Thrust
Metric Series

W, EW, XW, MT



Dimensions				Load Rating		AEC Bearing	M
inch (mm)				kN			
d	D	B	r	Dynamic (C)	Static (C ₀)		
0.375	1.0000	0.5312	0.0315 (0.8)	8.90	8.90	W 3/8	•
0.438	1.2812	0.6250	0.0315 (0.8)	14.90	15.80	W 7/16	
0.500	1.2812	0.6250	0.0315 (0.8)	19.20	20.00	W 1/2	•
0.563	1.4062	0.6250	0.0315 (0.8)	20.00	22.50	W 9/16	
0.625	1.4062	0.6250	0.0315 (0.8)	20.00	22.50	W 5/8	
0.750	1.5313	0.6250	0.0315 (0.8)	18.20	23.70	W 3/4	
	1.5625	0.7187	0.0315 (0.8)	20.80	25.00	MT 3/4	•
0.875	1.6562	0.6250	0.0315 (0.8)	19.60	27.60	W 7/8	
	1.8125	0.7500	0.0315 (0.8)	24.80	30.80	MT 7/8	•
1.000	1.7813	0.6250	0.0630 (1.6)	19.30	27.60	W 1	
	2.0000	0.7500	0.0630 (1.6)	27.30	37.00	MT 1	•
1.125	1.9063	0.6250	0.0630 (1.6)	20.50	31.60	W 1.1/8	
	2.2500	0.8750	0.0630 (1.6)	34.00	44.40	MT 1.1/8	•
1.250	2.0625	0.5000	0.0630 (1.6)	4.47	8.90	EW 1.1/4	
	2.0937	0.7187	0.0630 (1.6)	23.10	35.00	W 1.1/4	
	2.5000	1.0000	0.0630 (1.6)	45.60	60.50	MT 1.1/4	•
1.375	2.1875	0.5000	0.0630 (1.6)	4.36	8.90	EW 1.3/8	
	2.2187	0.7187	0.0630 (1.6)	22.70	35.00	W 1.3/8	
1.500	2.3125	0.5000	0.0630 (1.6)	4.62	10.00	EW 1.1/2	
	2.3438	0.7187	0.0630 (1.6)	24.30	40.00	W 1.1/2	
	2.8750	1.1250	0.0630 (1.6)	57.30	79.00	MT 1.1/2	•
1.625	2.4375	0.5000	0.0630 (1.6)	4.54	10.00	EW 1.5/8	
	2.4687	0.7187	0.0630 (1.6)	23.90	40.00	W 1.5/8	•
1.751	2.6250	0.6250	0.0630 (1.6)	5.70	12.70	EW 1.3/4	
	2.6875	0.7500	0.0630 (1.6)	35.40	59.50	W 1.3/4	
	3.3125	1.2500	0.0630 (1.6)	84.50	122.00	MT 1.3/4	•
1.875	2.7500	0.6250	0.0630 (1.6)	6.00	14.10	EW 1.7/8	
	2.8125	0.7500	0.0630 (1.6)	31.00	55.50	W 1.7/8	
2.000	2.8750	0.6250	0.0630 (1.6)	5.90	14.10	EW 2	
	3.0625	0.6875	0.0630 (1.6)	25.90	50.00	XW 2	
	2.9688	0.7500	0.0945 (2.4)	33.60	65.00	W 2	
	3.6875	1.3750	0.0945 (2.4)	96.00	148.00	MT 2	•

Dimensions				Load Rating		AEC Bearing	M
inch (mm)				kN			
d	D	B	r	Dynamic (C)	Static (C ₀)		
2.125	3.1875	0.6875	0.0630 (1.6)	25.50	50.00	XW 2.1/8	•
	3.2187	0.8750	0.0945 (2.4)	43.70	80.00	W 2.1/8	•
2.250	3.1250	0.6250	0.0630 (1.6)	6.10	15.50	EW 2.1/4	
	3.3125	0.6875	0.0630 (1.6)	26.80	55.00	XW 2.1/4	•
	3.3437	0.8750	0.0945 (2.4)	43.10	80.00	W 2.1/4	•
	4.2500	1.6875	0.0945 (2.4)	128.00	195.00	MT 2.1/4	•
2.375	3.4375	0.6875	0.0630 (1.6)	26.50	55.00	XW 2.3/8	•
	3.5937	1.0000	0.0945 (2.4)	58.00	109.00	W 2.3/8	
2.500	3.5625	0.6875	0.0630 (1.6)	27.70	60.00	XW 2.1/2	•
	3.7187	1.0000	0.0945 (2.4)	57.50	109.00	W 2.1/2	•
	4.7500	2.0000	0.0945 (2.4)	160.00	242.00	MT 2.1/2	•
2.625	3.7500	0.7500	0.0630 (1.6)	32.10	68.00	XW 2.5/8	•
	3.8437	1.0000	0.0945 (2.4)	57.00	109.00	W 2.5/8	•
2.750	3.8750	0.7500	0.0630 (1.6)	33.70	74.00	XW 2.3/4	•
	4.0314	1.0000	0.0945 (2.4)	56.50	109.00	W 2.3/4	•
	5.0000	2.0000	0.0945 (2.4)	163.20	290.00	MT 2.3/4	•
2.875	4.0000	0.7500	0.0630 (1.6)	35.10	80.00	XW 2.7/8	•
	4.1562	1.0000	0.0945 (2.4)	64.00	125.00	W 2.7/8	•
3.000	4.1250	0.7500	0.0630 (1.6)	34.80	80.00	XW 3	•
	4.3750	1.1250	0.1260 (3.2)	72.50	142.00	W 3	•
	5.6250	2.2500	0.1260 (3.2)	226.00	379.00	MT 3	•
3.125	4.2500	0.7500	0.0630 (1.6)	34.80	84.00	XW 3.1/8	•
	4.5000	1.1250	0.1260 (3.2)	87.00	178.00	W 3.1/8	•
3.250	4.3750	0.7500	0.0630 (1.6)	35.80	86.50	XW 3.1/4	•
	4.8125	1.2500	0.1260 (3.2)	90.50	180.00	W 3.1/4	•
3.375	4.9375	1.2500	0.1260 (3.2)	89.50	180.00	W 3.3/8	•
3.500	4.6250	0.7500	0.0630 (1.6)	36.80	92.50	XW 3.1/2	•
	5.0625	1.2500	0.1260 (3.2)	88.50	180.00	W 3.1/2	•
	6.4375	2.5000	0.1260 (3.2)	274.00	490.00	MT 3.1/2	•
3.625	5.1875	1.2500	0.1260 (3.2)	94.50	200.00	W 3.5/8	•
3.750	4.8750	0.7500	0.0630 (1.6)	37.70	98.50	XW 3.3/4	•
	5.3125	1.2500	0.1260 (3.2)	93.50	200.00	W 3.3/4	•
3.875	5.6875	1.3750	0.1260 (3.2)	107.00	222.00	W 3.7/8	•
4.000	5.2500	0.8750	0.0945 (2.4)	49.50	124.00	XW 4	•
	5.8125	1.3750	0.1260 (3.2)	122.00	258.00	W 4	•
	7.2500	2.8125	0.1260 (3.2)	305.00	592.00	MT 4	•
4.250	6.3125	1.7500	0.1260 (3.2)	153.00	320.00	W 4.1/4	•
4.500	5.7500	1.0000	0.0945 (2.4)	50.50	133.00	XW 4.1/2	•
	6.5625	1.7500	0.1890 (4.8)	150.00	320.00	W 4.1/2	•
	8.3750	3.3750	0.1890 (4.8)	398.00	853.00	MT 4.1/2	•
4.750	7.0625	2.0000	0.1890 (4.8)	203.00	435.00	W 4.3/4	
5.000	6.5000	1.1250	0.0945 (2.4)	67.00	181.00	XW 5	•
	7.3125	2.0000	0.1890 (4.8)	201.00	435.00	W 5	•
	9.5000	4.0000	0.1890 (4.8)	473.00	1064.00	MT 5	•
5.500	7.0000	1.1250	0.0945 (2.4)	68.50	193.00	XW 5.1/2	•
	8.0625	2.1875	0.1890 (4.8)	258.00	568.00	W 5.1/2	•
	10.3750	4.2500	0.1890 (4.8)	486.00	1110.00	MT 5.1/2	•
6.000	7.6250	1.2500	0.1260 (3.2)	88.00	253.00	XW 6	•

Dimensions				Load Rating		AEC Bearing	M
inch (mm)				kN			
d	D	B	r	Dynamic (C)	Static (C ₀)		
	8.6875	2.3750	0.1890 (4.8)	280.00	642.00	W 6	•
	11.1250	4.5000	0.1890 (4.8)	564.00	1390.00	MT 6	•
6.500	8.1250	1.2500	0.1260 (3.2)	90.00	268.00	XW 6.1/2	•
	9.4063	2.5000	0.250 (6.35)	312.00	759.00	W 6.1/2	•
7.000	8.7500	1.3750	0.1260 (3.2)	113.00	340.00	XW 7	•
	10.1250	2.6250	0.250 (6.35)	346.00	891.00	W 7	•
	12.7500	5.0000	0.250 (6.35)	619.00	1599.00	MT 7	•
7.500	9.2500	1.3750	0.1260 (3.2)	115.00	360.00	XW 7.1/2	•
	10.8750	2.7500	0.250 (6.35)	310.00	799.00	W 7.1/2	•
8.000	10.0000	1.5000	0.1260 (3.2)	135.00	419.00	XW 8	•
	11.6250	3.0000	0.250 (6.35)	339.00	888.00	W 8	•
	14.3750	5.6250	0.250 (6.35)	713.00	1974.00	MT 8	•
8.500	10.5000	1.5000	0.1260 (3.2)	138.00	444.00	XW 8.1/2	•
9.000	11.2500	1.8750	0.1890 (4.8)	191.00	604.00	XW 9	•
	13.1250	3.5000	0.250 (6.35)	445.00	1277.00	W 9	•
	16.6250	6.7500	0.250 (6.35)	931.00	2840.00	MT 9	•
9.500	11.7500	1.8750	0.1890 (4.8)	196.00	640.00	XW 9.1/2	•
10.000	12.5000	2.1250	0.1890 (4.8)	246.00	770.00	XW 10	•
	14.6250	4.0000	0.3110 (7.9)	561.00	1740.00	W 10	•
10.500	13.0000	2.1250	0.1890 (4.8)	253.00	823.00	XW 10.1/2	•
11.000	13.7500	2.3750	0.1890 (4.8)	276.00	885.00	XW 11	•
	15.8750	4.2500	0.3110 (7.9)	613.00	2000.00	W 11	•
11.500	14.2500	2.3750	0.1890 (4.8)	284.00	943.00	XW 11.1/2	•
12.000	15.0000	2.5000	0.1890 (4.8)	307.00	1010.00	XW 12	•
	17.3750	4.5000	0.3110 (7.9)	667.00	2274.00	W 12	•
12.500	15.5000	2.6250	0.250 (6.35)	317.00	1072.00	XW 12.1/2	•
13.000	16.2500	2.7500	0.250 (6.35)	333.00	1140.00	XW 13	•
13.500	16.7500	2.8750	0.250 (6.35)	363.00	1280.00	XW 13.1/2	•
14.000	17.5000	3.0000	0.250 (6.35)	376.00	1330.00	XW 14	•
14.500	18.0000	3.1250	0.250 (6.35)	407.00	1480.00	XW 14.1/2	•
15.000	18.7500	3.2500	0.250 (6.35)	419.00	1570.00	XW 15	•
15.500	19.2500	3.3750	0.250 (6.35)	434.00	1630.00	XW 15.1/2	•
16.000	20.0000	3.5000	0.250 (6.35)	464.00	1790.00	XW 16	•
16.500	20.5000	3.6250	0.250 (6.35)	481.00	1910.00	XW 16.1/2	•
17.000	21.2500	3.7500	0.250 (6.35)	514.00	2081.00	XW 17	•
17.500	21.7500	3.8750	0.3110 (7.9)	548.00	2270.00	XW 17.1/2	•
18.000	22.5000	4.0000	0.3110 (7.9)	543.00	2270.00	XW 18	•