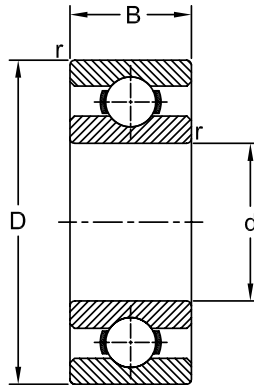


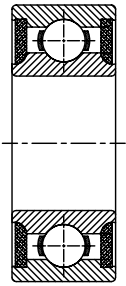
Ball Bearings

Wide Row
Metric Series

W200, W300



ZZ



O/S

Dimensions				Load Rating		AEC Bearing	M	ZZ	O/S
mm				kN					
d	D	B	r	Dynamic (C)	Static (C ₀)				
17	40	17.46	0.6	9.6	4.8	W 203 PP		•	•
20	47	20.64	1.0	12.7	6.6	W 204 PP		•	•
	52	22.23	1.0	15.9	7.8	W 304 PP		•	•
25	52	20.64	1.0	14.0	7.8	W 205 PP		•	•
	62	25.40	1.0	22.5	11.6	W 305 PP		•	•
30	62	23.81	1.0	19.5	11.2	W 206 PP		•	•
	72	30.16	1.0	28.1	16.0	W 306 PP		•	•
35	72	26.99	1.0	25.5	15.3	W 207 PP		•	•
	80	34.93	1.5	33.2	19.0	W 307 PP		•	•
40	80	30.16	1.0	30.7	19.0	W 208 PP		•	•
	90	36.51	1.5	41.0	24.0	W 308 PP		•	•
45	85	30.16	1.0	33.2	21.6	W 209 PP		•	•
	100	39.69	1.5	52.7	31.5	W 309 PP		•	•
50	90	30.16	1.0	35.1	23.2	W 210 PP		•	•
	110	44.45	2.0	61.8	38.0	W 310 PP		•	•
55	100	33.34	1.5	43.6	29.0	W 211 PP		•	•
	120	49.21	2.0	71.5	45.0	W 311 PP		•	•
60	110	36.51	1.5	47.5	32.5	W 212 PP		•	•
	130	53.93	2.0	81.9	52.0	W 312 PP		•	•
65	120	38.10	1.5	55.9	40.5	W 213 PP		•	•
	140	58.74	2.0	92.3	60.0	W 313 PP		•	•
70	125	39.69	1.5	60.5	45.0	W 214 PP		•	•
	150	63.50	2.0	104.0	68.0	W 314 PP		•	•
75	130	41.28	1.5	66.3	49.0	W 215 PP		•	•
	160	68.26	2.0	114.0	76.5	W 315 PP		•	•
80	140	44.45	2.0	70.2	55.0	W 216 PP		•	•
	170	68.26	2.0	124.0	86.5	W 316 PP		•	•

Dimensions				Load Rating		AEC Bearing	M	ZZ	O/S
mm				kN					
d	D	B	r	Dynamic (C)	Static (C ₀)				
85	150	49.21	2.0	83.2	64.0	W 217 PP		•	•
	180	73.03	2.5	133.0	96.5	W 317 PP		•	•
90	160	52.39	2.0	95.6	73.5	W 218 PP		•	•
	190	73.03	2.5	143.0	108.0	W 318 PP	•	•	•
95	200	77.78	3.0	153.0	118.0	W 319 PP	•	•	•
100	215	82.55	3.0	174.0	140.0	W 320 PP	•	•	•