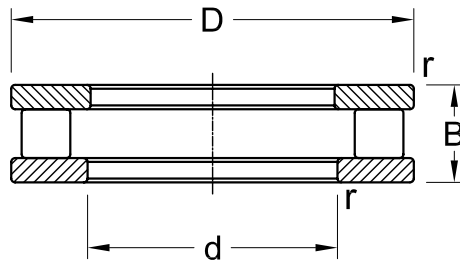
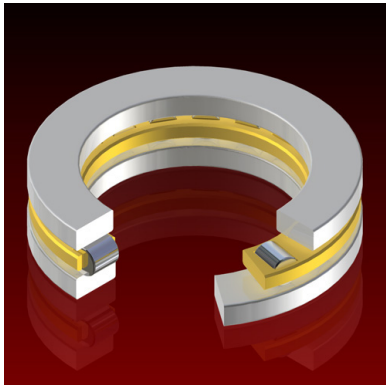


Cylindrical Roller Bearings

Thrust
Metric Series

811, 812



Dimensions				Load Rating		AEC Bearing
mm				kN		
d	D	B	r	Dynamic (C)	Static (C ₀)	
15	28	9	0.3	11.2	27.0	81102
17	30	9	0.3	11.6	29.0	81103
20	35	10	0.3	17.6	44.0	81104
25	42	11	0.6	24.0	65.5	81105
30	47	11	0.6	24.5	69.5	81106
	52	16	0.6	50.0	134.0	81206
35	52	12	0.6	27.0	83.0	81107
	62	18	1.0	62.0	190.0	81207
40	60	13	0.6	38.0	118.0	81108
	68	19	1.0	83.0	255.0	81208
45	65	14	0.6	40.5	132.0	81109
	73	20	1.0	86.5	270.0	81209
50	70	14	0.6	42.5	146.0	81110
	78	22	1.0	91.5	300.0	81210
55	78	16	0.6	69.5	285.0	81111
	90	25	1.0	116.0	365.0	81211
60	85	17	1.0	80.0	300.0	81112
	95	26	1.0	137.0	465.0	81212
65	90	18	1.0	83.0	320.0	81113
	100	27	1.0	140.0	490.0	81213
70	95	18	1.0	86.5	345.0	81114
	105	27	1.0	146.0	530.0	81214
75	100	19	1.0	75.0	290.0	81115
	110	27	1.0	125.0	440.0	81215
80	105	19	1.0	76.5	300.0	81116
	115	28	1.0	160.0	610.0	81216
85	110	19	1.0	76.5	310.0	81117
	125	31	1.0	153.0	550.0	81217

Dimensions				Load Rating		AEC Bearing
mm				kN		
d	D	B	r	Dynamic (C)	Static (C ₀)	
90	120	22	1.0	104.0	415.0	81118
	135	35	1.1	232.0	865.0	81218
100	135	25	1.0	146.0	585.0	81120
	150	38	1.1	224.0	830.0	81220
110	145	25	1.0	153.0	630.0	81122
	160	38	1.1	240.0	915.0	81222
120	155	25	1.0	160.0	680.0	81124
	170	39	1.1	245.0	965.0	81224
130	170	30	1.0	183.0	780.0	81126
	190	45	1.5	335.0	1250.0	81226
140	180	31	1.0	193.0	850.0	81128
	200	46	1.5	360.0	1400.0	81228
150	190	31	1.0	200.0	900.0	81130
	215	50	1.5	465.0	1900.0	81230
160	200	31	1.0	204.0	965.0	81132
	225	51	1.5	480.0	2000.0	81232
170	215	34	1.1	260.0	1180.0	81134
	240	55	1.5	540.0	2280.0	81234
180	225	34	1.1	270.0	1270.0	81136
	250	56	1.5	550.0	2400.0	81236
190	240	37	1.1	310.0	1460.0	81138
	270	62	2.0	695.0	2900.0	81238
200	250	37	1.1	310.0	1500.0	81140
	280	62	2.0	720.0	3100.0	81240
220	270	37	1.1	335.0	1700.0	81144
	300	63	2.0	750.0	3350.0	81244
240	300	45	1.5	475.0	2450.0	81148
	340	78	2.1	1100.0	4900.0	81248
260	320	45	1.5	490.0	2600.0	81152
	360	79	2.1	1140.0	5300.0	81252
280	350	53	1.5	680.0	3550.0	81156
	380	80	2.1	1160.0	5500.0	81256
300	380	62	2.0	850.0	4400.0	81160
	420	95	3.0	1530.0	7200.0	81260
320	400	63	2.0	880.0	4650.0	81164
	440	95	3.0	1560.0	7500.0	81264
340	420	64	2.0	900.0	4900.0	81168
	460	96	3.0	1630.0	8000.0	81268
360	440	65	2.0	915.0	5000.0	81172
	500	110	4.0	2160.0	10400.0	81272
380	460	65	2.0	930.0	5300.0	81176
	520	112	4.0	2200.0	10800.0	81276

Dimensions				Load Rating		AEC Bearing
mm				kN		
d	D	B	r	Dynamic (C)	Static (C ₀)	
400	480	65	2.0	965.0	5600.0	81180
	540	112	4.0	2240.0	11200.0	81280
420	500	65	2.0	980.0	5850.0	81184
	580	130	5.0	2850.0	14000.0	81284
440	540	80	2.1	1430.0	8000.0	81188
	600	130	5.0	2900.0	14600.0	81288
460	560	80	2.1	1460.0	8500.0	81192
	620	130	5.0	3000.0	15300.0	81292
480	580	80	2.1	1460.0	8650.0	81196
	650	135	5.0	3350.0	17000.0	81296
500	600	80	2.1	1530.0	9150.0	811/500
	670	135	5.0	3400.0	17600.0	812/500
530	640	85	3.0	1700.0	10400.0	811/530
	710	140	5.0	3800.0	20000.0	812/530
560	670	85	3.0	1760.0	10800.0	811/560
	750	150	5.0	3900.0	20800.0	812/560
600	710	85	3.0	1760.0	11200.0	811/600
	800	160	5.0	4400.0	24000.0	812/600
630	750	95	3.0	2160.0	13700.0	811/630