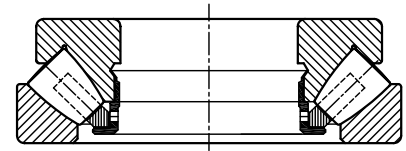
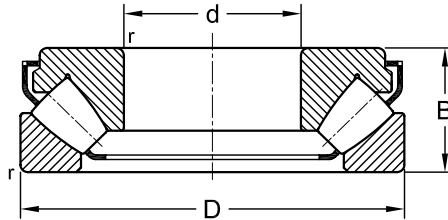
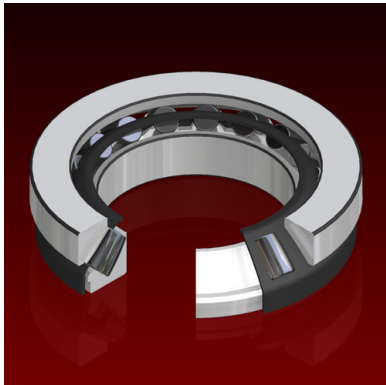


Spherical Roller Bearings

Thrust
Metric Series

29



Dimensions				Load Rating		AEC Bearing	M
mm				kN			
d	D	B	r	Dynamic (C)	Static (C ₀)		
60	130	42	1.5	345.0	915.0	29412 E	•
65	140	45	2.0	397.0	1080.0	29413 E	•
70	150	48	2.0	449.0	1250.0	29414 E	•
75	160	51	2.0	518.0	1430.0	29415 E	•
80	170	54	2.1	575.0	1630.0	29416 E	•
85	150	39	1.5	334.0	1060.0	29317 E	•
	180	58	2.1	633.0	1800.0	29417 E	•
90	155	39	1.5	345.0	1080.0	29318 E	•
	190	60	2.1	702.0	2000.0	29418 E	•
100	170	42	1.5	408.0	1290.0	29320 E	•
	210	67	3.0	863.0	2500.0	29420 E	•
110	190	48	2.0	535.0	1730.0	29322 E	•
	230	73	3.0	1010.0	3000.0	29422 E	•
120	210	54	2.1	656.0	2120.0	29324 E	•
	250	78	4.0	1170.0	3450.0	29424 E	•
130	225	58	2.1	753.0	2500.0	29326 E	•
	270	85	4.0	1380.0	4050.0	29426 E	•
140	240	60	2.1	845.0	2850.0	29328 E	•
	280	85	4.0	1400.0	4300.0	29428 E	•
150	215	39	1.5	345.0	1370.0	29230	•
	250	60	2.1	863.0	2850.0	29330 E	•
	300	90	4.0	1610.0	5100.0	29430 E	•
160	225	39	1.5	357.0	1460.0	29232	•
	270	67	3.0	1010.0	3450.0	29332 E	•
	320	95	5.0	1790.0	5600.0	29432 E	•
170	240	42	1.5	408.0	1660.0	29234	•
	280	67	3.0	1050.0	3550.0	29334 E	•
	340	103	5.0	2020.0	6550.0	29434 E	•
180	250	42	1.5	420.0	1760.0	29236	•
	300	73	3.0	1240.0	4300.0	29336 E	•
	360	109	5.0	2250.0	7350.0	29436 E	•
190	270	48	2.0	518.0	2200.0	29238 E	•

Dimensions				Load Rating		AEC Bearing	M
mm				kN			
d	D	B	r	Dynamic (C)	Static (C ₀)		
	320	78	4.0	1400.0	4750.0	29338 E	•
	380	115	5.0	2480.0	8000.0	29438 E	•
200	280	48	2.0	535.0	2280.0	29240	•
	340	85	4.0	1610.0	5500.0	29340 E	•
	400	122	5.0	2760.0	9000.0	29440 E	•
220	300	48	2.0	546.0	2400.0	29244	•
	360	85	4.0	1730.0	6300.0	29344 E	•
	420	122	6.0	2880.0	9650.0	29444 E	•
240	340	60	2.1	799.0	3450.0	29248	•
	380	85	4.0	1790.0	6550.0	29348 E	•
	440	122	6.0	2990.0	10200.0	29448 E	•
260	360	60	2.1	817.0	3650.0	29252	•
	420	95	5.0	2220.0	8300.0	29352 E	•
	480	132	6.0	3510.0	12900.0	29452 E	•
280	380	60	2.1	863.0	4000.0	29256	•
	440	95	5.0	2190.0	8650.0	29356 E	•
	520	145	6.0	4310.0	15300.0	29456 E	•
300	420	73	3.0	1070.0	4800.0	29260	•
	480	109	5.0	2670.0	10600.0	29360 E	•
	540	145	6.0	4370.0	16600.0	29460 E	•
320	440	73	3.0	1110.0	5100.0	29264	•
	500	109	5.0	2880.0	11200.0	29364 E	•
	580	155	7.0	4950.0	19000.0	29464 E	•
340	460	73	3.0	1130.0	5400.0	29268	•
	540	122	5.0	2710.0	11000.0	29368	•
	620	170	7.5	5750.0	22400.0	29468 E	•
360	500	85	4.0	1460.0	6800.0	29272	•
	560	122	5.0	2760.0	11600.0	29372	•
	640	170	7.5	5350.0	21200.0	29472 E	•
380	520	85	4.0	1580.0	7650.0	29276	•
	600	132	6.0	3340.0	14000.0	29376	•
	670	175	7.5	5870.0	24000.0	29476 E	•
400	540	85	4.0	1610.0	8000.0	29280	•
	620	132	6.0	3450.0	14600.0	29380	•
	710	185	7.5	6560.0	26500.0	29480 E	•
420	580	95	4.0	1990.0	9800.0	29284	•
	650	140	6.0	3740.0	16000.0	29384	•
	730	185	7.5	6730.0	27500.0	29484 E	•
440	600	95	5.0	2070.0	10400.0	29288	•
	680	145	6.0	4490.0	19300.0	29388	•
	780	206	9.5	7820.0	32000.0	29488 E	•
460	620	95	5.0	2070.0	10600.0	29292	•
	710	150	6.0	4310.0	19000.0	29392	•
	800	206	9.5	7990.0	33500.0	29492 E	•
480	650	103	5.0	2350.0	11800.0	29296	•
	730	150	6.0	4370.0	19600.0	29396	•
	850	224	9.5	9550.0	39000.0	29496 E	•